

UR-W376C

UR-W376C features a six-section hydraulic boom to allow a maximum hook height of 14.9m.

The middle size UNIC mini-crawler crane can be operated either from the onboard operator seat or from a distance using a remote control. Its class-leading boom length of 14.61m brings wide working radius and excellent lifting height.

Max **14.9m**
Hook height (Approx.)
(above ground level)

with electric power unit



Max **3.03t**
x **2.5m**
Lifting capacity

Max **14.45m**
Working radius

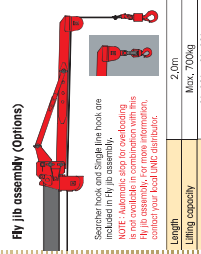
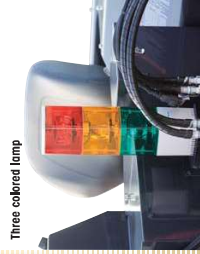
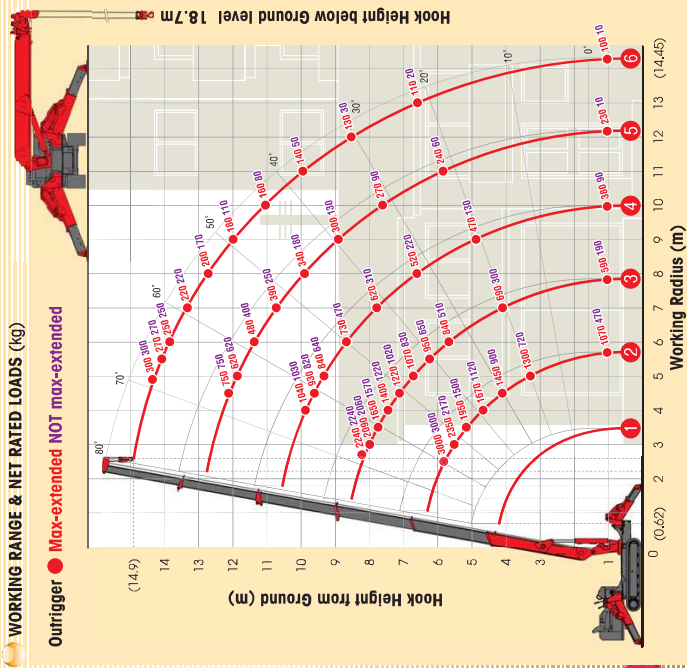
Max **3860kg**
Mass of crane

Radio remote control

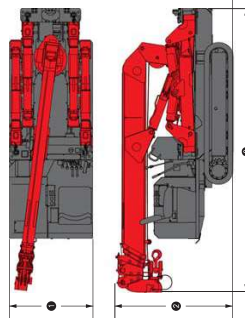
SPECIFICATIONS

Crane model		UR-W376C2
Lifting capacity		Max. 3.03t @ 2.5m
Working radius		Max. 14.45m
Hook height (Approx.)	Above ground level Below ground level	Max. 14.9m Max. 18.7m with 4-part line
Length		Min. 3.63m to Max. 14.01m
Extending speed	(with electric power unit)	10.88m / 23.0 sec.
Retracting speed	(with electric power unit)	10.88m / 40.0 sec.
Rolling angle / speed		0° to 80° / 10.0 sec.
Structure		[50Hz] 0° to 80° / 18.0 sec. [60Hz] 0° to 80° / 15.0 sec.
Single line speed	(with electric power unit)	68.0 m/min (at 4th line) [50Hz] 34.0 m/min (at 4th line) [60Hz] 34.0 m/min (at 4th line)
Hook speed	(with electric power unit)	7.0 m/min (at 4th line) with 4-part line
Winch	Structure	Hydraulic motor driven, 30% gear reduction, with automatic mechanical brake and size rope reducing roller
Wire rope	Hook block	Construction: IMC 6 x WS(28) GRADE E7 Diameter: 8mm x 85.0m / breaking strength: 42.4kN (9320 kJ) 3,000 capacity, 2 sheaves with safety latch
Hoisting	Speed (with electric power unit)	360° continuous rotation on a ball bearing case
Structure	Horizontal / Vertical	2.5 rpm [50Hz] 2.1 rpm [60Hz] 2.5 rpm
Type		Hydraulic motor driven, worm gear reduction, and worm self-locking brake (supported by ball bearings)
Rated pressure		A double acting hydraulic cylinder, direct pushing type (Direct) connected with hydraulic automatic lock device
Rated capacity		Variable call key piston pump
Rated revolution		21.8 RPM (220 kg/m ²)
Hydraulic oil tank capacity		600 liter/min
		2500 rpm
		75 liter
Safety devices		Pressure relief valve for hydraulic circuit / Counterbalance valve for boom raising and boom telescoping cylinders / Pilot-operated check valve for outrigger cylinders (horizontal) / Double pilot-operated check valve for outrigger cylinders (vertical) / Boom angle indicator with load indicator / Hook safety limit / Automatic mechanical brake for winch / Overload protection device / Boom angle indicator with load indicator / Hook safety limit / Automatic mechanical brake for winch / Interlock device of crane and outriggers / Level / Automatic stop for overloading (KM-100) / Digital load meter / Three colored lamp / Hoisting / Boom outrigger readable lamp

UNIC MINI-CRAWLER CRANE



DIMENSIONS



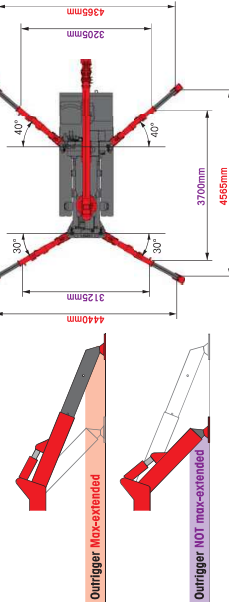
Crane model		UR-W376C2
Total width		1300mm
Total height		1800mm
Total length		4340mm
Mass of crane		3860kg (4010kg) [with electric power unit]

Electric power unit specifications

Rated power	7.5kW (3-phase 4 poles)
Voltage	AC 200V or 400V (50Hz / 60Hz) 3 phase 4P

*No included any cables.

OUTRIGGER POSITIONS



CRAWLING GEAR

Crane model		UR-W376C2
Crawling speed		0-3.0 km/h, forward / backward [50Hz] 0-1.3 km/h [60Hz] 0-1.5 km/h
Hill climbing ability	(with electric power unit)	23°
Tread length		1750mm
Ground contact pressure		36.3 kPa (0.37 kg/cm ²) 37.2 kPa (0.38 kg/cm ²) [with electric power unit]
Engine manufacturer / model		Yanmar / 3TNV76
Displacement		1115cc
Maximum output		15.17kW (20.6PS) / 2900 rpm, Rated output
Fuel		Diesel
Fuel tank capacity		40 liter
Steering		Hydraulic drive independent of left / right
Swivel		Swivel motor